

# Post/Bracket/Hardware

## POST & POST TOP FINIALS



OPR123BK

Post is 3" O.D., 12' long, and painted semi gloss black. It is predrilled to accept 2 brackets either standard or inverted.



Pineapple top finial  
OPA657MD



Spear top finial  
OPA9516MD

Post top finials are painted black to match post and brackets. They come with set screws to attach to the post.



## SIGN BRACKETS



DOGWOOD BRACKET WITH LEMON DROP FINIAL  
FOR 30" SIGN  
OB1227JR3BKBKLD



SCROLL BRACKET WITH LEMON DROP FINIAL  
FOR 30" SIGN  
OB1228JR3BKBKLD

Brackets are painted to match post and finials. They come with set screws to attach to post and signs - Ask for square back plate if you intend to mount bracket to a flat surface. Flat post and wall mount available.

## TRAFFIC SIGNS/FRAMES

Traffic signs to match the custom street name system

### ANGLE IRON FRAMES

OPA1218FR  
OPA1824FR  
OPA2424DFR  
OPA2424OFR  
OPA3030DFR  
OPA3030OFR

### SIGNS WITH BLACK BACKS ONLY

OPA1218BK  
OPA1824BK  
OPA2424BK  
OPA3030BK

Choose from the signs on page ? and add to the part numbers above.

O - OCTAGON SHAPE  
D- DIAMOND OR SQUARE SHAPE

## MISCELLANEOUS HARDWARE/POST

8' Post for mounting traffic signs.  
OPR083BK

1/4" TORX head screw bit  
RTHB14

3 1/2" TORX bit extension  
RTHB3

Black set screw for post top finials  
RHSK56BLACK

1/4" X 1" Self tapping screw for mounting traffic signs  
(cannot be removed with a screwdriver)  
RH141HEX

1/4" X 1" TORX head screw  
(for attaching street signs and brackets-vandal proof)  
RTH140

## U-CHANNEL POST ACCESSORIES

U-Channel Posts are manufactured from high tensile steel. Available in your choice of hot dip galvanized or green baked enamel paint finish. Punched full length with 3/8" holes on 1" centers. Measured by length and pounds per foot.



1.12GR 2GR 1.12GA 2GA 3GA

### U - CHANNEL POST

STOCK#	SIZE	DESCRIPTION
RPOCG061	6FT 1.12LB	galvanized
RPOCG071	7FT 1.12LB	galvanized
RPOCG062	6FT 2LB	galvanized
RPOCG082	8FT 2LB	galvanized
RPOCG0925	9FT 2.5LB	galvanized
RPOCG102	10FT 2LB	galvanized
RPOCG122	12FT 2LB	galvanized
RPOCG123	12FT 3LB	galvanized
RPOCP061	6FT 1.12LB	green
RPOCP062	6FT 2LB	green
RPOCP082	8FT 2LB	green
RPOCP102	10FT 2LB	green
RPOCP122	12FT 2LB	green

# Post/Bracket/Hardware

## U-CHANNEL POST ACCESSORIES

### SIGN SAVER



SIGN SAVER  
BA080SAVER

PLACE BETWEEN SIGN AND POST AND SIGN WILL NOT BEND FROM OVER TIGHTENING.

### ANCHOR PLATE



GALVANIZED ANCHOR PLATE  
BA080APLATEUCH

KEEPS POST FIRMLY IN PLACE

### LAP SPLICE BREAKAWAY SYSTEM



ECONOMICAL BREAKAWAY SYSTEM BY MARION STEEL. FHWA & ASHTO APPROVED (MEETS THE REVISED JULY 1, 1990 FHWA GUIDELINES). POSTS TO 4 LBS. ANY SIZE SP-80 U-CHANNEL POST 2 SPECIAL BOLTS & SPACERS JOIN BASE POST TO TOP POST.

RHLAPSPICE

## U-CHANNEL POST HARDWARE

### BOLTS



RHB203  
ZINC CARRIAGE  
BOLT

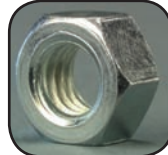


RHB102  
ZINC HEX  
BOLT



RHB303  
ONE-WAY  
TAMPER  
BOLT

### NUTS



RHNUT  
ZINC NUT



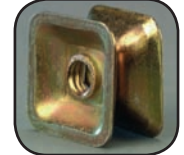
RHVPNUT  
BREAKAWAY  
VANDAL PROOF  
NUT



RHNUTFLUTED  
FLUTED  
TAMPER  
RESISTANT  
NUT



RT2  
TOOL FOR  
FLUTED NUT



RHTN31  
TUFNUT

### WASHERS



RHWASH  
ZINC WASHER



RHWASHNYLON  
NYLON  
WASHER



RHWASHLOC  
ZINC  
LOCK WASHER

### RIVETS



CHERRYMATE  
RIVET



RHBALMGUN  
RIVET GUN

STOCK #

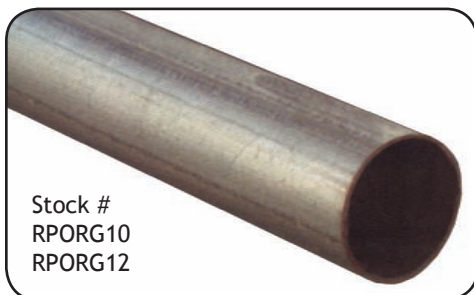
RHBALM8BP18  
RHBALM8BP26  
RHBALM8BP34

SIZE

DELINEATOR POST  
2# POST  
3-4# POST

## ROUND POST

2 3/8" O.D. round galvanized steel post available in 10' and 12' lengths. The wall thickness is .065" thick (16 gauge).



Stock #  
RPORG10  
RPORG12

## ROUND POST BRACKETS

For mounting sign to 2 3/8" O.D. round post. Priced per set, single or back to back brackets, and closure caps are available.



RPBZ238



RPBBB832



RPBCDC250



RPBRPCLCAP

# Post/Bracket/Hardware

## ANCHOR PLATE FOR ROUND POST

Solve your round post anchoring problem with these anchor plates designed to keep post from turning and reducing the need for concrete.



BA080APLATE238



RH141HEX  
SELF TAPPING METAL SCREW  
(2 REQUIRED)



RH141HEXSETTER  
DRILL BIT FOR SCREWS



## SQUARE POST



- Easy, safe installation by hand or power
- Convenient sign mounting before installation
- Superior torsional strength
- Versatile, four sided sign mounting, at any height
- Fast, economical replacement of damaged sign posts
- Reusable materials
- FHWA-approved yielding capability
- Other sizes, gauges, and lengths available. Call for quotation.

PART #	SIZE
RP0SG0814175	8' 14 Gauge 1.75"
RP0SG1014175	10' 14 Gauge 1.75"
RP0SG1214175	12' 14 Gauge 1.75"
RP0SG03122*	3' 12 Gauge 2.00"
RP0SG08142	8' 14 Gauge 2.00"
RP0SG10142	10' 14 Gauge 2.00"
RP0SG12142	12' 14 Gauge 2.00"
RP0SG0312225*	3' 12 Gauge 2.25"

\* Base post for breakaway feature.

## SQUARE POST HARDWARE



RHDRIVERIVETA  
Aluminum drive rivet for square post



RHCORNERBOLT  
Corner bolt to mount top post to base post.  
Use a nut from page 15



RPBSP175PCAP  
RPBSP2PCAP  
Pyramid Cap

## ORNAMENTAL POST

Another post option is the ornamental post made to the same specifications as the custom street name system (page 13). 8' or 12' lengths available with choice of top finial. Frames are available to wrap around signs (see page 13-14 for details).



OPA657MD



OPA9516MD



OPR123BK  
12' POST  
OPR083BK  
8' POST



SELF TAPPING SCREW  
RTH140

# Post/Bracket/Hardware

## PEDESTAL BASES



**CAST IRON**  
Pedestal bases are drilled for mounting 12x18, 18x24 and 24x24 signs.  
  
RPOGP4 14" cast iron base with 4' pipe. weighs 27 lbs.

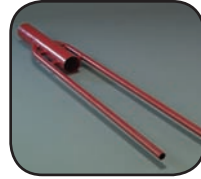
## DRIVE CAPS/POST DRIVER



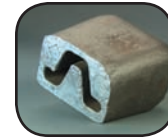
**RH30100**  
STEEL U-CHANNEL  
4.5 LBS



**RHRP100**  
STEEL ROUND  
POST  
3 LBS



**RHDH8**  
ONE MAN  
POST  
DRIVER  
65" LONG  
38 LBS



**RH17BIGBOYDRIVE**  
BIG BOY DRIVE CAP  
17 LBS

## POST PULLERS



**JACK BASE AND HEAVY DUTY HANDLE**  
(PULLER NOT INCLUDED)  
RH7

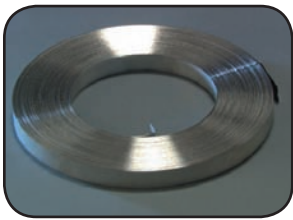


**HYDRAULIC POST PULLER JACK**  
RHPL3



**DETACHABLE PULLER**  
USE WITH EITHER JACK  
RH4A

## STAINLESS STEEL STRAPPING



**STRAPPING**  
RH3420SS  
3/4" X .020" X 200'



**RHMODEL C1**  
Strap Cutter



**RHMODEL C001**  
Spinner Type Strapping Tool



**RHMODEL P1**  
Ratchet Type  
Strapping Tool



**RHBB7**  
Buckle Bracket  
For post 4"-12" in diameter,  
price is per set.



**RH3425SS**  
3/4" X .025" X 100'

**RH3432SS**  
3/4" X .032" X 100'

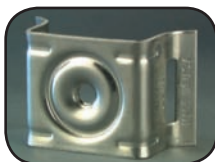


**RHSLA**  
SNAP LOCK ASSEMBLY  
Radiator like clamp for sign mounting.  
Needs only a screwdriver to tighten.  
9/16" x 40" strap length.

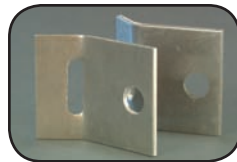
## STAINLESS STEEL BRACKETS



**RHMINUS4SS**  
Minus 4 Sign  
Bracket  
For posts Less  
than 4" in  
diameter



**RHPLUS4SS**  
Plus 4 Sign  
bracket for post  
more than 4" in  
diameter



**RHCSS**  
Cantilever sign bracket



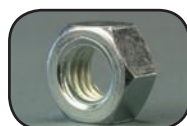
**RH3465SS**  
Buckle



**RH06SS**  
Wing Seal



**RH516SS**  
5/16" x 18 x 3/4"  
Stainless steel bolt



**RH8SS**  
5/16" stainless steel nut

# Post/Bracket/Hardware

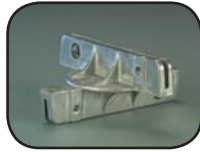
## SUPER-LOK PREMIUM BRACKETS



RPB922F  
RPB922X  
Round Post Cap



RPB91UF-NU180  
RPB91UX-NU180  
180° U-Channel Cap



RPB990F  
RPB990X  
Crosspiece



RPB457F  
RPB457X  
45° Universal



RPB91UF-OL90  
RPB91UX-OL90  
90° U-Channel Cap

SUPER-LOK Premium Brackets - 5 1/2" slot includes hardware for flat(F) or extruded(X) signs.

## ROK-PRUF ECONO BRACKETS



RPBROKPRUF1  
180° U-Channel Cap



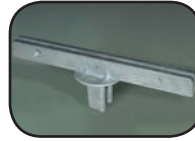
RPBROKPRUF2  
Round Post Cap



RPB390  
Crosspiece

ROK-PRUF Econo Brackets - 3 3/8" slot for flat blades, includes hardware.

## 12" JUMBO BRACKETS



RPB412UFOL90  
90° U-Channel Cap Flat & Square Post



RPB412UFNU180  
180° U-Channel Cap Flat & Square Post



RPB412RF  
RPB412RX  
Round Post Cap



RPB412CF  
RPB412CX  
CROSSPIECE

## MISC. BRACKETS



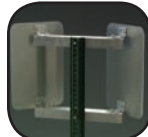
4"x4" WOOD POST  
RPB827F  
RPB827X



DECORATIVE TOP FINIAL  
RPB317F  
RPB317X



CHAINLINK FENCE BRACKET  
SIGN SAVER  
BA080SAVER

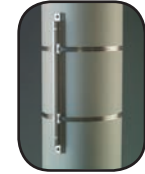


CHEVRON ADJUSTABLE BRACKET  
RPBCAB1 (12"x18" - 18"x24")  
RPBCAB2 (18"x24" - 24"x30")  
RPBCAB3 (24"x30" - 30"x36")

## WING BRACKETS/STRAP OR BOLT TO WALL/POLE



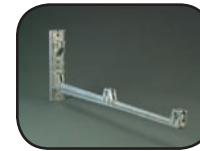
RPB8  
14.5" LONG  
FLAT OR EXTRUDED



BELL WING BRACKET  
RPBBW12 - 12"  
RPBBW18 - 18"  
RPBBW24 - 24"  
HARDWARE NOT INCLUDED



RPB4  
4.5"x2.5"  
FLAT BLADES



RPB800  
24" LONG  
FLAT OR EXTRUDED

## METRO STREET SIGN BRACKETS



OVERHEAD SPAN WIRE  
RPBGR80

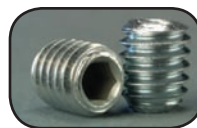


OVERHEAD MAST ARM  
RPBCOM88



OVERHEAD SPAN WIRE  
RPBCOMM77

## BRACKET HARDWARE/TOOLS



RHSK56  
STANDARD SET SCREW



RHSSK56  
STAINLESS STEEL SET SCREW



RHPRP38  
CENTER PIN SET SCREW



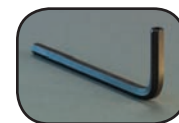
RHBHP76  
BUTTON HEAD VANDAL RESISTANT BOLT



RHVA12  
12 POINT VANDAL RESISTANT BOLT



RPBT100  
ALLEN WRENCH TOOL



RPBF100  
ALLEN WRENCH TOOL



RPBT43  
12 POINT TOOL FOR RHVA12